



## **KIKU Company Introduction**



KIKU Co.

- **Global IP Business**
- **Global Toys Distribution**
- **Professional Toy Marketing**

# KIKU Co.,Ltd



**<KIKU Co.,Ltd>  
Contents Entertainment Union**

1

## **Contents**

- Korea's highest level of dubbing and directing quality  
Complete localization translation, video editing.  
Experience in numerous overseas work services

2

## **IP Business**

- Cooperation with numerous partners in the World
- Business of toys, publishing, theme parks, etc.
- TV Animation production

3

## **Distribution**

- One-stop distribution and organization for all toy channels in Korea

4

## **Marketing**

- Working with TV stations
- Collect and analyze all data
- Customized marketing for Korean customers

1

# KIKU Co.,Ltd Introduction

Location



## Office



81-21 Deumbak-ro, Yangchon-eup,  
Gimpo-si, Gyeonggi-do, 10045, Republic  
of Korea



## Warehouse



81-21 Deumbak-ro, Yangchon-eup, Gimpo-si,  
Gyeonggi-do, 10045, Republic of Korea



# KIKU Co.,Ltd Reliability

발급번호 제 20250122030073 호

## 벤처기업확인서

CERTIFICATE OF VENTURE ENTERPRISE



- 기업명 주식회사 키쿠
- 사업자등록번호 539-86-02698
- 대표자 홍문기
- 주소 경기도 김포시 양촌읍 돌박로 81-21 전체
- 확인유형 혁신성장유형
- 유효기간 2025년 01월 22일 ~ 2028년 01월 21일

위 기업은 「벤처기업육성에 관한 특별법」 제25조의 규정에 의거 벤처기업임을 확인합니다.

2025년 01월 22일




이 확인서는 「벤처기업법」 제25조의3(벤처기업확인기관의 지정 등)에 따라 지정된 벤처기업확인기관  
(사)벤처기업협회)이 벤처기업공감관리시스템을 통해 정보를 확인하고 발급한 확인서입니다.  
(벤처기업확인기관 지정기간 : '20.7.1 ~ '26.6.30)

벤처기업 해당사유 : 벤처기업법 제2조의2제1항제2호 가목의 요건을 충족하는 벤처기업 (또는 나목의 요건을 충족하는 벤처기업, 또는 다목의 요건을 충족하는 벤처기업)

“Confirmation letter of Venture Company”

제 NICE-2024-77-000123 호



## 2024년 기술평가 우수기업 인증서


(주)키쿠

인증기간 : 2024.03.05 ~ 2025.03.05

대표자명 : 홍문기  
기술등급 : 우수(T-6)  
기술명칭 : 캐릭터 장난감 기획 및 제조 기술

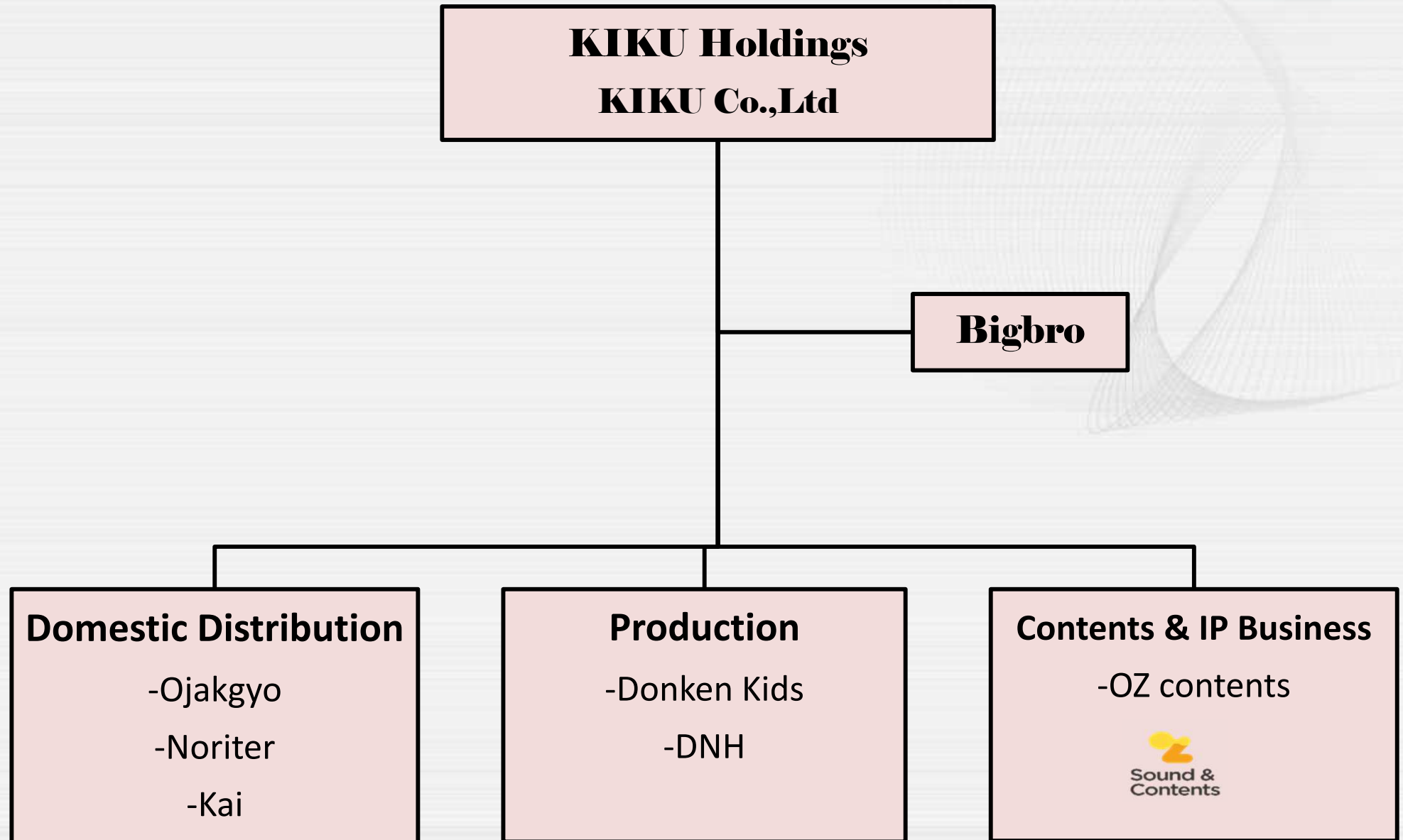
위 기업은 NICE평가정보의 기술평가 결과  
기술사업역량 및 기술경쟁력이 우수한 기업임을 인증합니다.

NICE평가정보(주) 대표이사



“Certificate of Excellent Technology  
Evaluation Company”

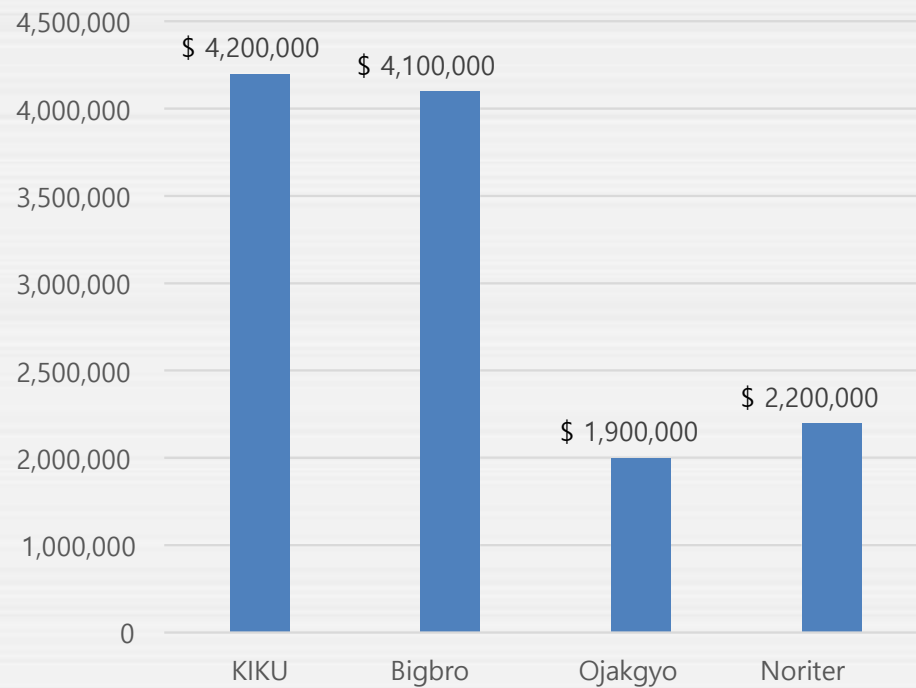
# 1 KIKU Co.,Ltd Organization Chart



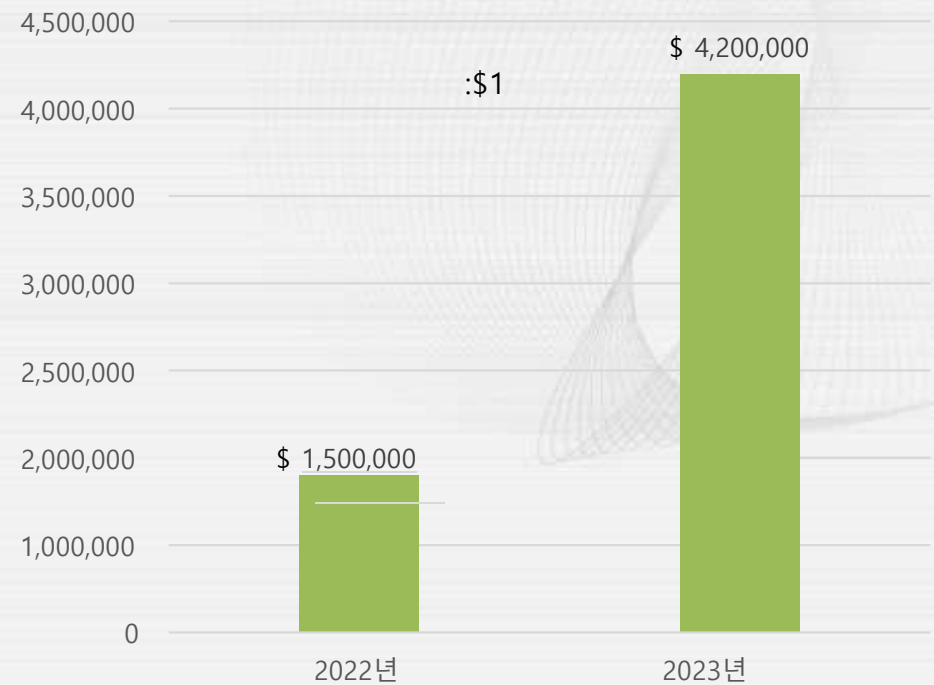
1

## KIKU Co. Introduction

Subsidiary companies & Sales Turnover



**Overall Sales turnover in 2023**



**KIKU established in 2022 and growing very fast and became one of leading Toy distributors in Korea markets**



**KIKU** is collaborating with overseas partners to maximize domestic sales.

**KIKU** is one of reliable and leading toy companies with passion and responsible to partners.

**KIKU** is also developing & manufacturing own block toys under license agreement and export to overseas.




# 1 KIKU's Animation –produced by KIKU



- (1) Title: Doggy Adventure
- (2) Genre: Adventure
- (3) Format: 13mins.X20eps
- (4) Production format :Full 3D
- (5) Age : 3-5 years old
- (6) Broadcasting: TV, Cable
- (7) Production budget:  
\$3,000,000

- (8) Produced by
  - KIKU Co.,Ltd
  - Sunboy Animation Co.,Ltd

**애니메이션 개요**



제목	댕댕어드벤처
장르	모험, 성장물
포맷	13분 * 20편
제작 방식	3D
대상 연령	3-5세
방송 플랫폼	지상파, 케이블
제작비	30억원
제작사	주식회사 키쿠 주식회사 오즈콘텐츠 선보이

**공룡부터 해적까지, 차원을 넘나드는 여행  
댕댕어드벤처와 함께 모험속으로 !**



1

## KIKU Co.,Ltd Introduction

Distribution Channels in Korea



### Online Social Commerce

coupang

위메프

TMON

### Online Open Market

Gmarket  
AUCTION.

INTERPARK

11

N 쇼핑

### Online Complex Shopping mall

GS SHOP  
CJmall

SSG.COM

AK PLAZA

LOTTE MALL

Hmall

1

## KIKU Co.,Ltd Introduction

Distribution Channels in Korea

Hyper markets

**ToysRus**

**LOTTE Mart**

**Homeplus**

**emart**

Department stores

**HYUNDAI**

DEPARTMENT STORE GROUP

**AK PLAZA**

**SHINSEGAE**

**HANTOY**

AURORA  
**TOY플러스**

**BENE\*PIA**

**For Your Kids**  
**TOY아울렛**

# ■ Distribution Channels in Korea

## Online\_Social Commerce

COUPAn WEMAKEPRICE TMON

## Online\_Open Market

Gmarket AUCTION. INTERPARK 11ST NAVER

## Online\_Complex shopping mall

GS SHOP CJmall SSG.COM emartmall AKmall.com 롯데이몰 Hmall.com Home plus 온라인몰

## large marts

TOYSRUS LOTTE Mart Home plus emart

## Department stores

HYUNDAI AK PLAZA SHINSEGAE

## Duty Free Shop

LOTTE DUTY FREE SHINSEGAE DUTY FREE

## Bookstore

ARTBOX

## local toy stores

HANTOY 토이플러스 BABY PARK 베이비파크 BENEPA MOMS MOM For Your Kids 토리아울렛





**KIKU is one of strongest toys distributors in Korea.**

**Organizations and distribution Channels, specializing for the Kids, Teens & Adults Products.**

**KIKU also has a right to distribute IPs product to theoverseas.**

## ■ Display at Stores (Hyper markets) Emarts/Lotte Marts/HomePlus/TRU

KIKU











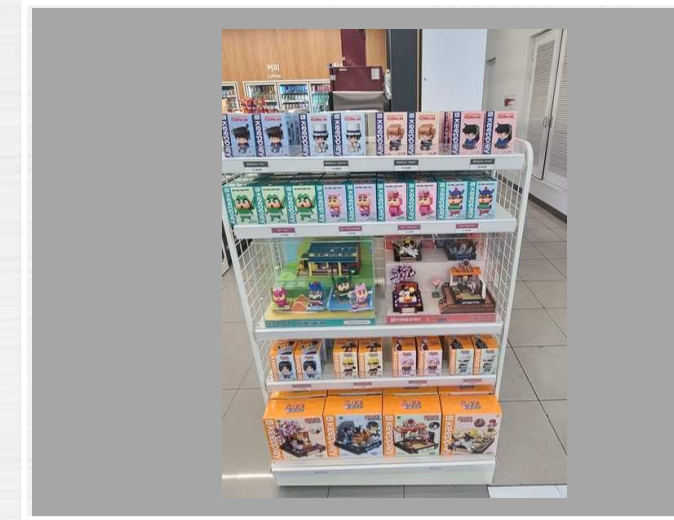


# ■ Display at Stores

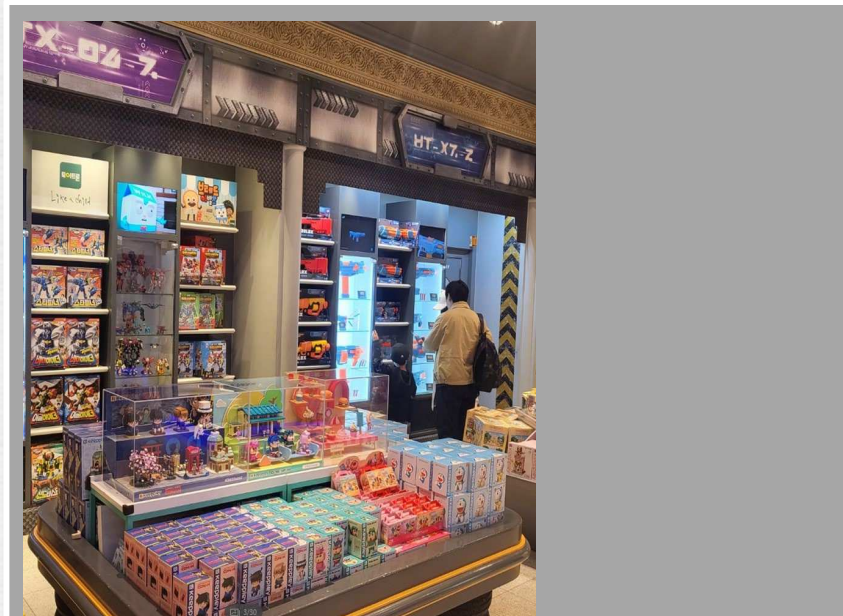
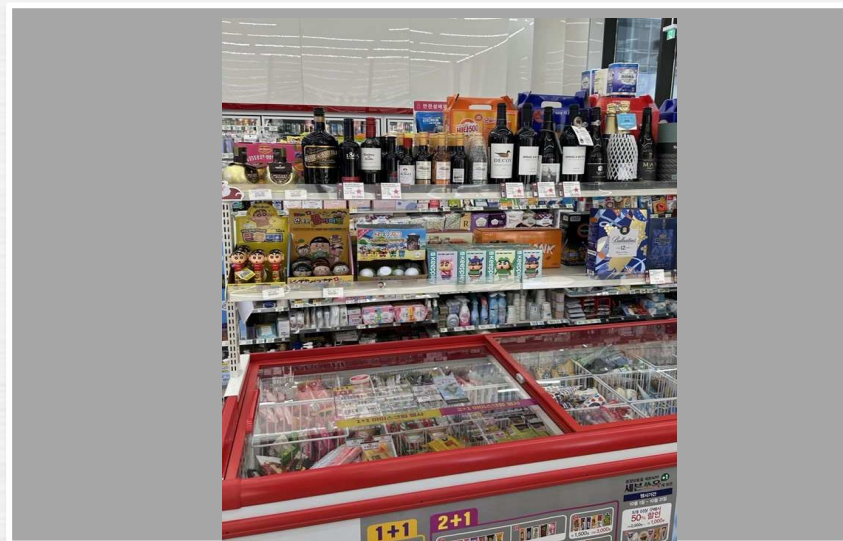
KIKU

## Theme park(Everland)

## Shops in Highway



## Convenience stores





# ■ Display at Large Book Stores

KIKU





# ■ Capsule Toys Business

## ■ Number of the vending machines with credit cards

**: 1,300 machines**





## ■ Shop in Entertainment Resorts





- **Everland, the Theme park**

- **Annual Visitors : More than 7,000,000**





- **KIKU Co.** provides unique ideas and develop the toys for **Everland**

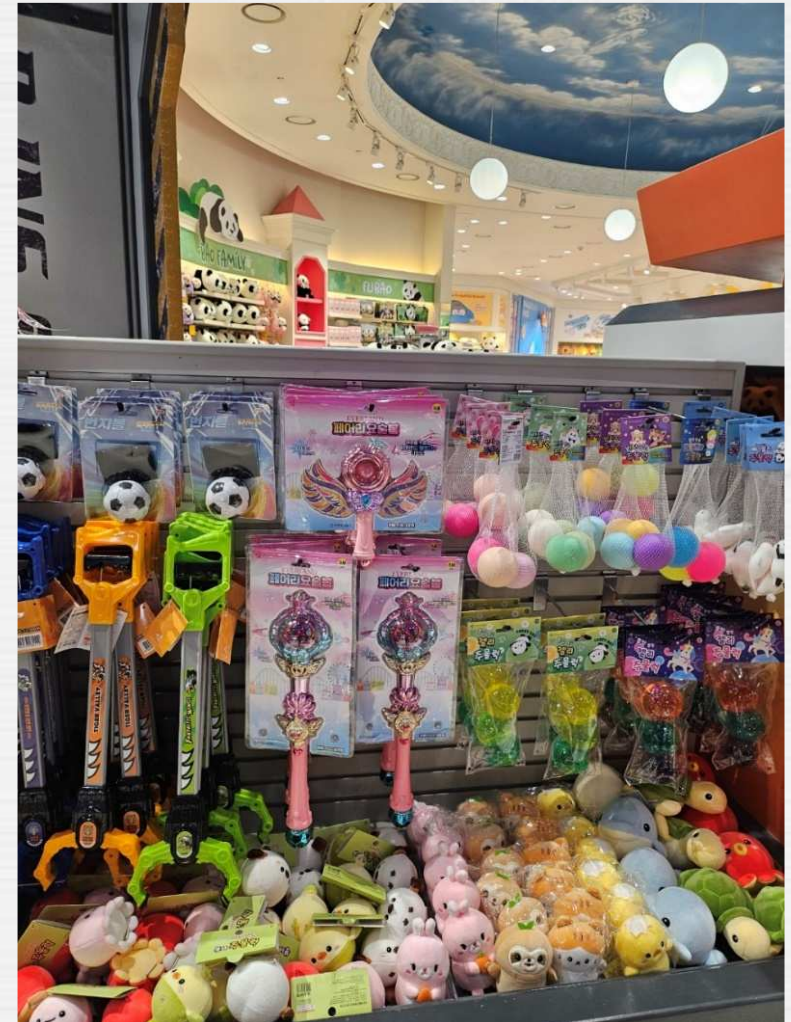








➤ **KIKU Co. supplying various theme park toys for the Kids**





- **KIKU Co. supplying various theme toys for the Kids**







## ❖ KIKU Brand Shop Plan

(Tentatively named )

**GameOver**

**Goods and Characters shop**



## ❖ New Store Opening Plan

**In 2025 : 2~4 stores at the metropolitan area**

**In 2026 : 6~8 stores at the metropolitan area and big cities in Nationwide**

## ❖ Franchising business

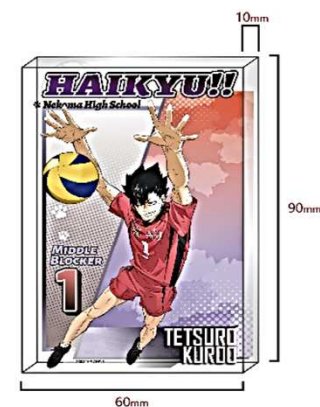
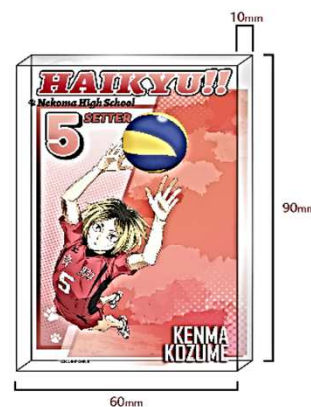
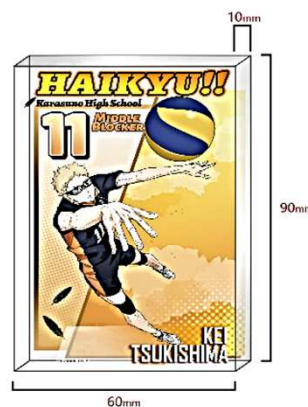
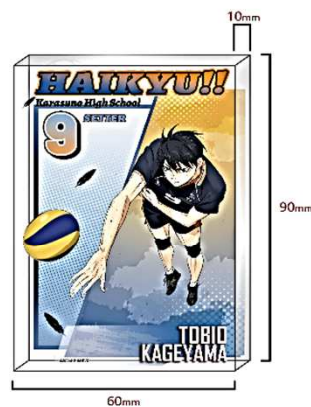
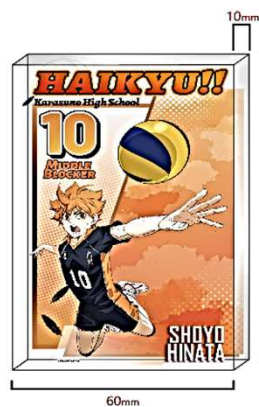
**Under the brand name of “GameOver”, we will continuously open the new stores in Nationwide up to 100 stores.**

# Product line Ups in **2025**





排球少年!!  
垃圾场决战





# FRIEREN





原神



# “Genshin Impact”

**Genshin Impact** is one of hottest mobile games not only Korea but also, in Asia including Japan  
**KIKU** has distribution right for all kind of merchandising products  
including toys

The New York Times

SUBSCRIBE



An advertisement for Genshin Impact in the Akihabara district of Tokyo. Noriko Hayashi for The New York Times



## A full-page illustration from the anime 'Sailor Moon'. The scene is set in a dark, futuristic environment with a large, curved, metallic structure in the foreground. Five characters are looking up at a large, glowing, red-haired figure (Sailor Moon) who is floating in the air. The figure has long, flowing red hair and is wearing a blue and white outfit. The characters are: a green-haired character in a white dress, a blue-haired character in a blue suit, a blonde character in a white dress, a white-haired character in a white dress, and a brown-haired character in a blue dress. The background is dark with stars and a bright light source behind the floating figure.





# JUJUTSU KAISEN





# Attack on Titan

進撃の巨人



# DADADAN





## ■ Product Line Ups

# Creyon Shinchan



# Conan



# Doraemon





## ■ Product Line Ups

### Naruto



### Ultraman



### Mine City





## ■ New Product Line Ups

### Hatsume Miko



### Sumikko Gurashi





## ■ 2025 KIKU's New Product Line Ups

### Chiikawa Figures



**KIKU** developed, produced and selling in Korea.  
One of hottest toy products in Korea now days.

**KIKU** also have a right to distribute to overseas.

## ■ 2025 KIKU's New Product Line Ups

### MIFFY Figures

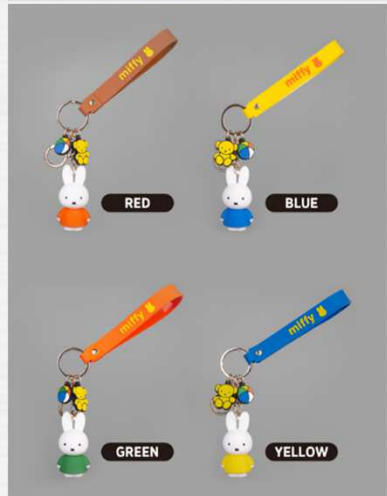


**KIKU** developed, produced and selling in Korea.  
One of hottest toy products in Korea now days.

**KIKU** also have a right to distribute to overseas.



## ■ 2025 KIKU's New Product Line Ups



### New Arrival MIFFY Accessories



**KIKU** developed, produced and selling in Korea.  
**One of hottest products in Korea now days.**  
**KIKU** also have a right to distribute to overseas.

## ■ 2025 KIKU's New Product Line Ups



### New Arrival MIFFY Accessories





**Genshin Impact** have more than 1,000 sku









## ■ 2024 Product Line Ups

### “Spy x Family”



**KIKU has a right to distribute Spy X Family toys.**



## ■ 2024 Product Line Ups

KIKU

### “Kungfu Panda 4”

#### 2.5" Noodle Box Surprise

Item # 23797

Avail: Late 2023

- Posed in awesome Kung Fu Panda character poses
- 12 asst figures to collect including a Limited Edition Golden PO!



JADE TRANSLUCENT VARIANTS

LIMITED EDITION  
GOLDEN PO

NOODLE BOX  
SURPRISE

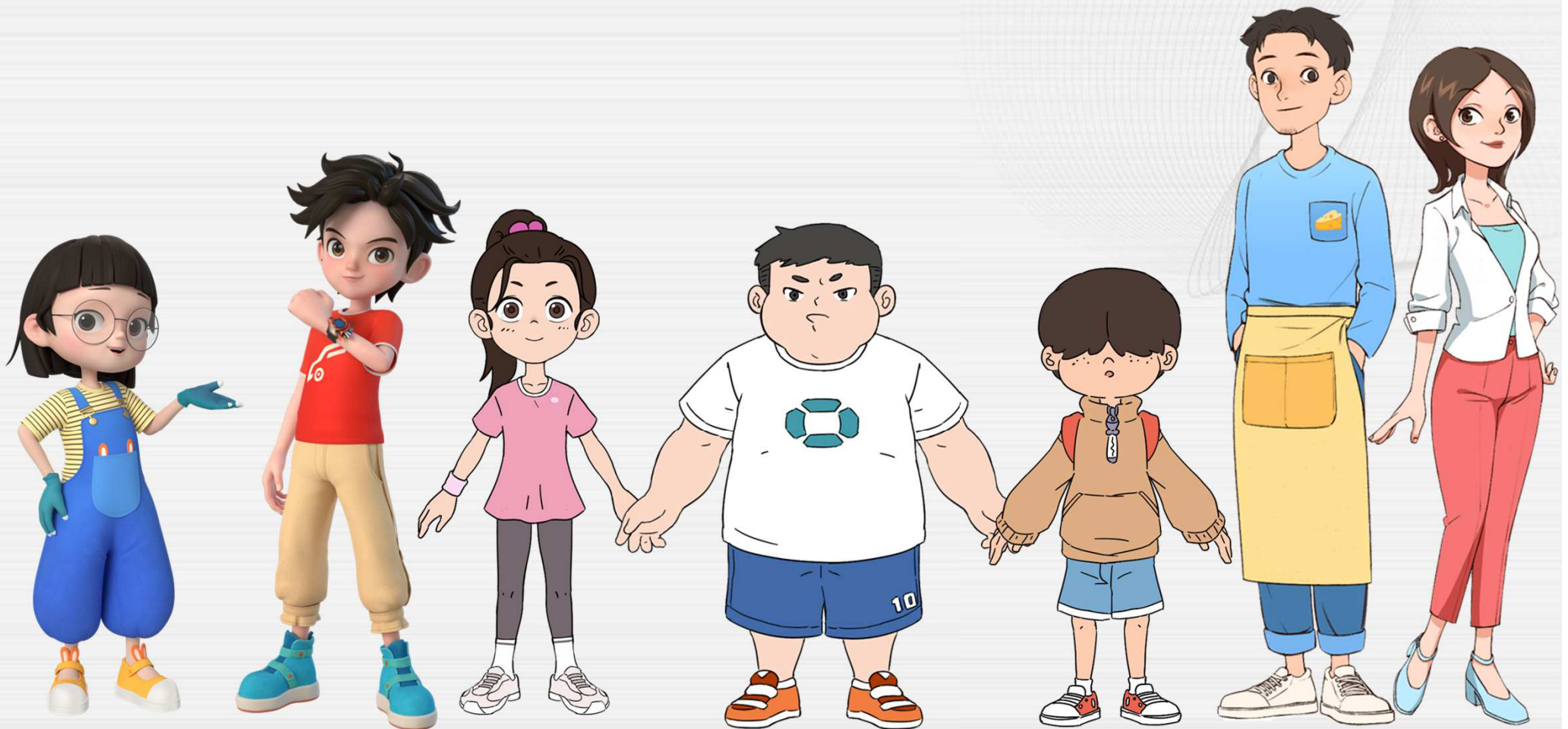
12 FIGURES TO  
COLLECT!



**The hottest animation movie in 2024  
and KIKU is distributing toy products in national wide.**

# **“DUEL MONSTER CARS”**

## **with TV animation**







**Genre** : Robot, Fantasy Comic

**FORMAT** : 11mins x 20 episodes

**Story** : Dual Monster Cars is about adventure, challenge, friendship and growth among friends, overcoming their limitations in various environments and finding the right values and dreams.

**Broadcasting schedule** : 2024.Oct.

# [Duel Monster Cars toy concepts]



**Transformation from cars to robot**







**Transformation from cars to robot**



## ■ New Product Line Ups

KIKU



Howl's Moving Castle



Reply1988







# Thank You

**One for all / All for one**

Contact to :

Wonbong Jang email: [wbja@naver.com](mailto:wbja@naver.com)

Mobile) +82-10-2055-3772

**Kiku planning team**